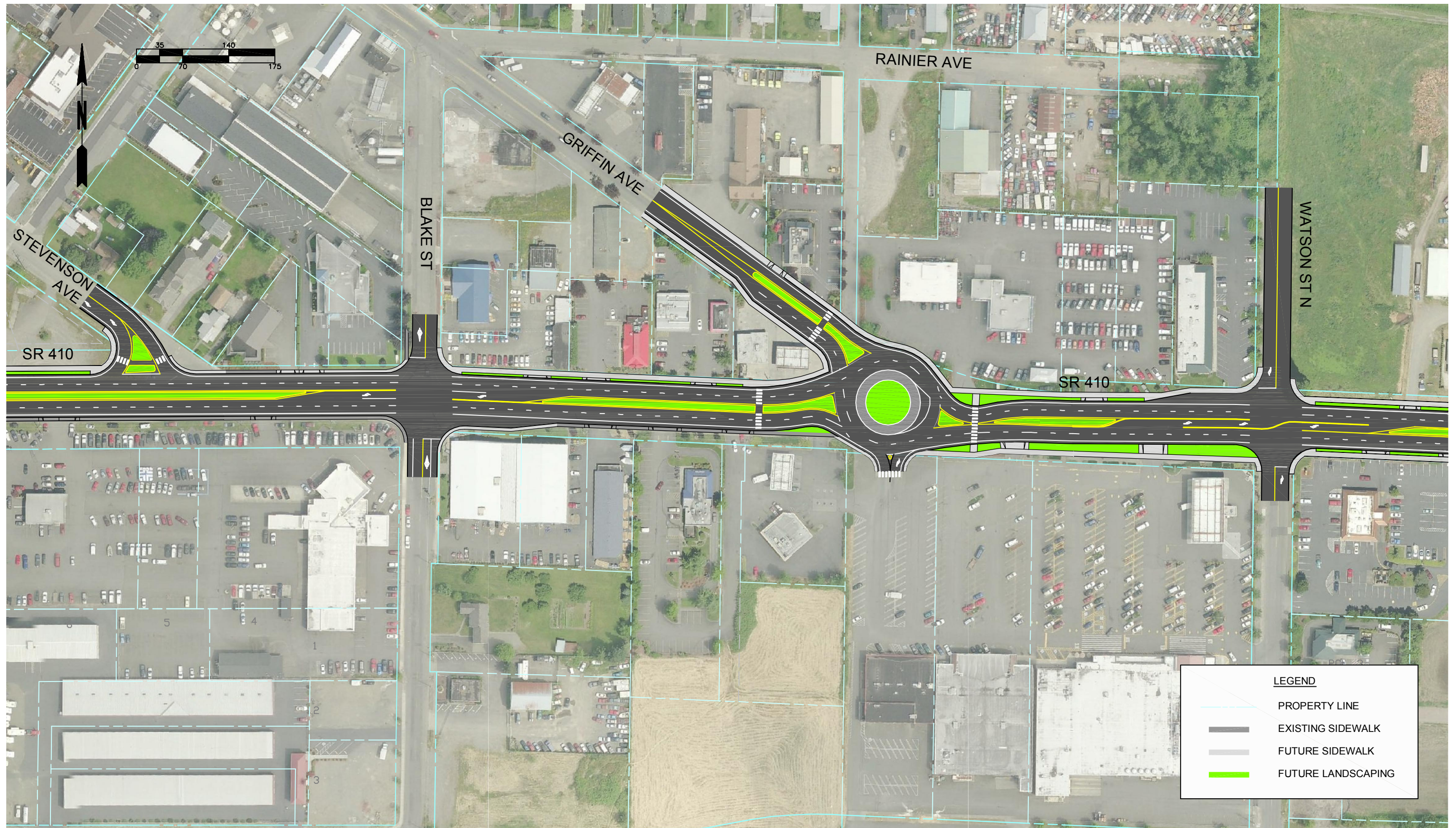




Segment 2: SR 164/Watson Street - Signal with Restricted Movements

SR 410 Corridor Study

M:\06\06395 SR 410 Corridor Study\6.0 Graphics\Alternatives\Alt_01A <A> robertm 12/10/09 15:55



Segment 2: SR 164/Watson Street - Roundabout with Restricted Movements



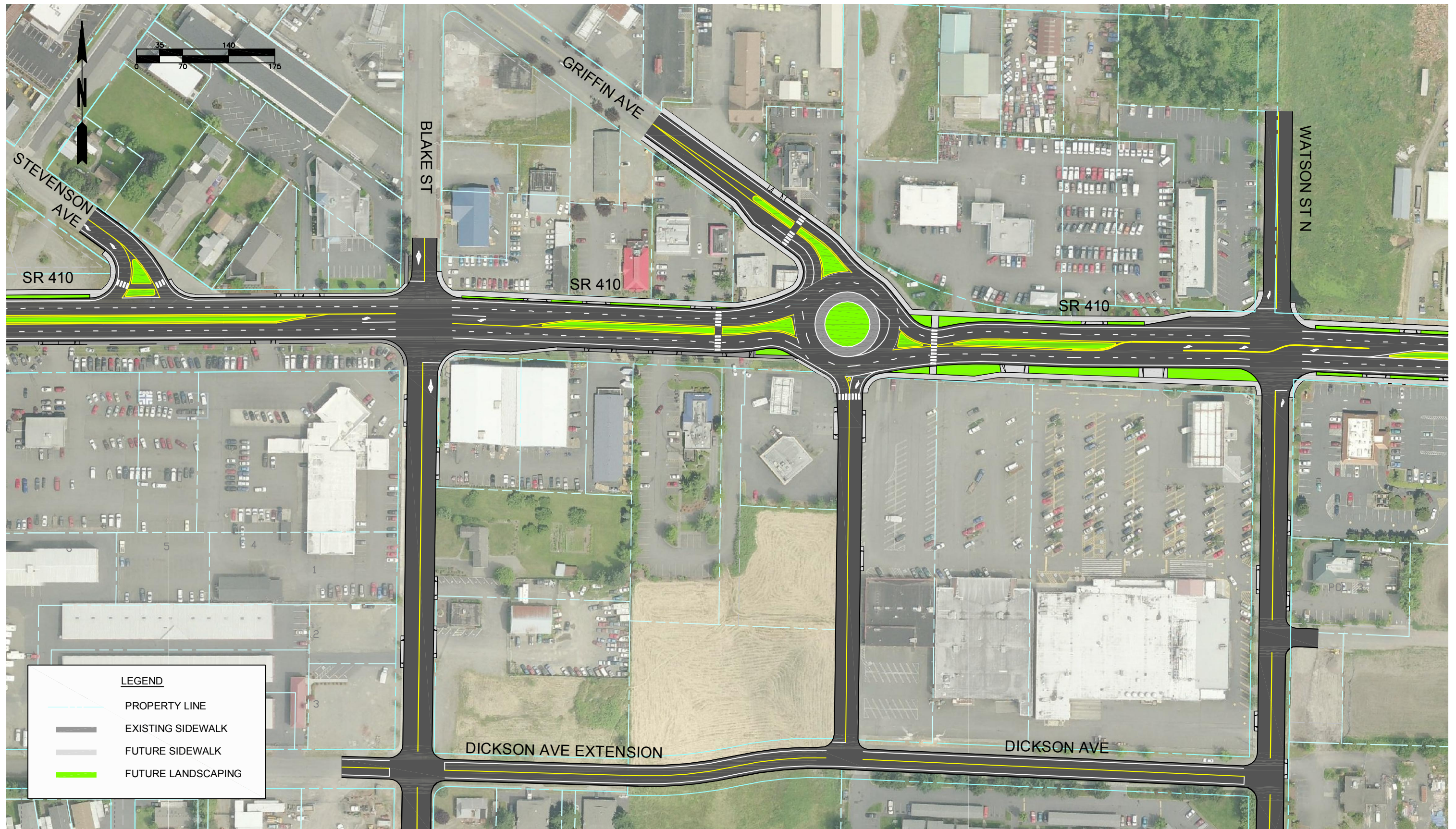
Segment 2: SR 164/Watson Street - Dual Signals



Segment 2: Garrett Street (2nd Street) to Griffin Avenue - TWLTL

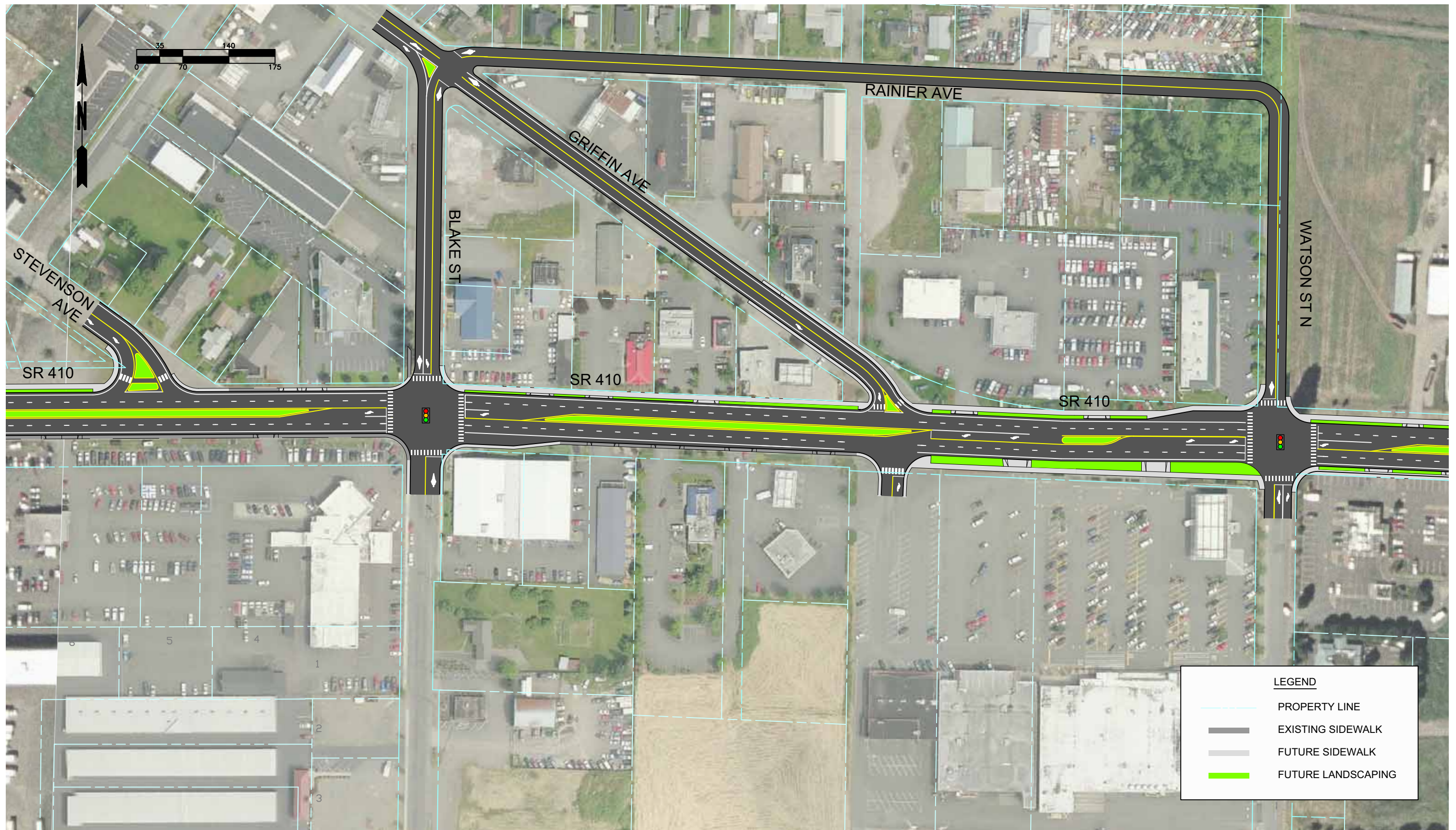
SR 410 Corridor Study

M:\06\06395 SR 410 Corridor Study\6.0 Graphics\Alternatives\Alt_05 <A> RobertM 06/23/10 16:12



Segment 2: SR 164/Watson Street - Roundabout with Dickson Avenue Extension

FIGURE



Segment 2: SR 164/Watson Street - Relocate SR 164 Traffic to Blake Street