



Segment 1: 244th Avenue SE Intersection - Traffic Signal

SR 410 Corridor Study

M:\06\06395 SR 410 Corridor Study\6.0 Graphics\Alternatives\Seg1 <244TH ALT 1A> robertm 12/10/09 15:19



Segment 1: 244th Avenue SE Intersection - Roundabout

SR 410 Corridor Study

M:\06106395 SR 410 Corridor Study\6.0 Graphics\Alternatives\Seg1 <244TH ALT 1B> robertm 12/10/09 15:21



Segment 1: Semanski Street S Intersection - Restricted Movements

SR 410 Corridor Study

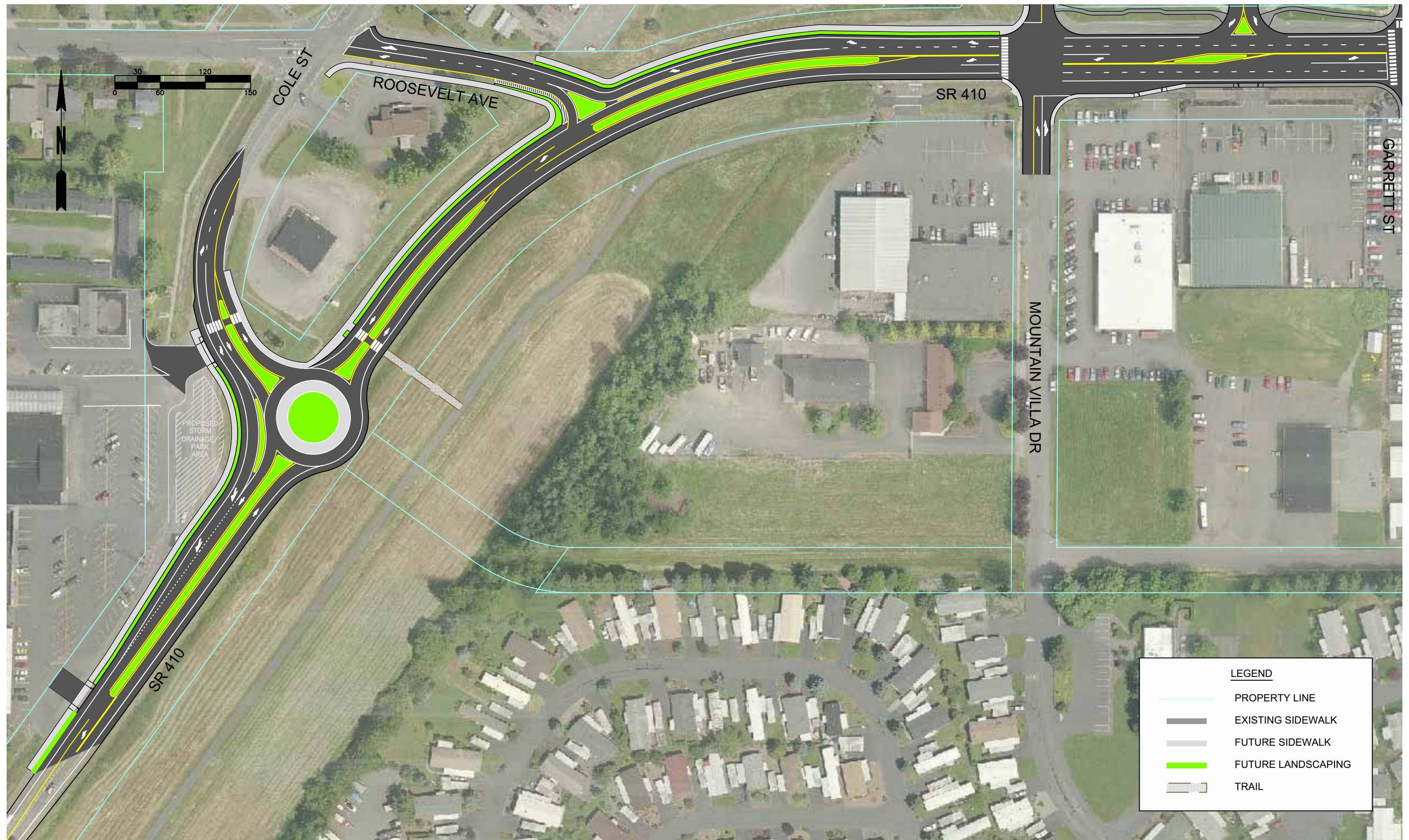
M:\06\06395 SR 410 Corridor Study\6.0 Graphics\Alternatives\Seg1 <SEMANSKI> RobertM 06/22/10 17:27



Segment 1: Semanski Street S Intersection - Realigned Intersection



Segment 1: Warner Avenue Intersection - Widen Out Approaches



Segment 2: Cole Street and Mountain Villa Drive Intersections - Pedestrian Crossing

SR 410 Corridor Study

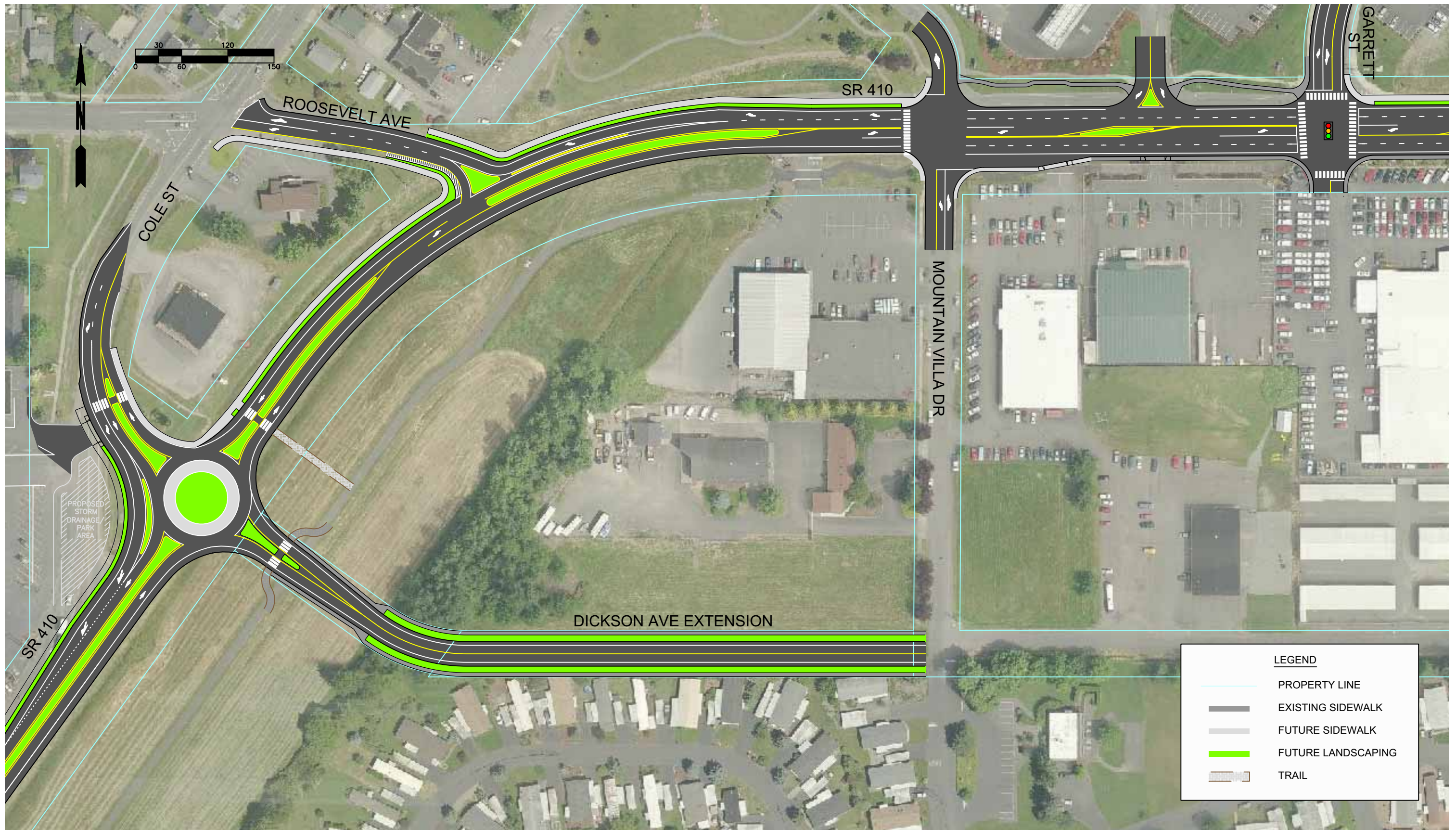
M:\06\06395 SR 410 Corridor Study\6.0 Graphics\Alternatives\Seg2-3 <MOUNTAIN VILLA DR ALT 1> robertm 05/21/10 09:15



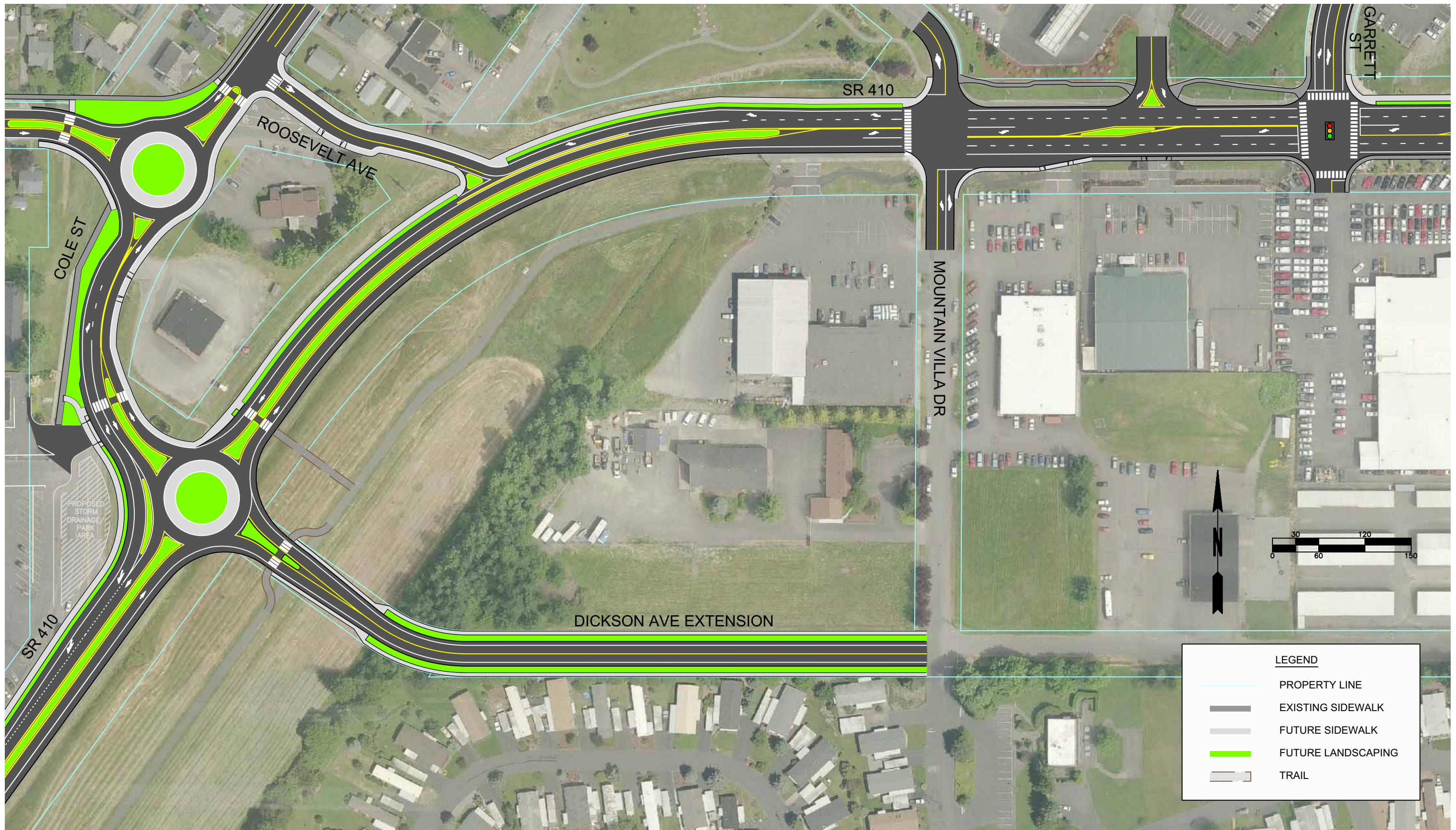
Segment 2: Cole Street and Mountain Villa Drive Intersections - Five Lanes

SR 410 Corridor Study

M:\06\06395 SR 410 Corridor Study\6.0 Graphics\Alternatives\Seg2-3 <MOUNTAIN VILLA DR ALT 1 (2)> robertm 05/21/10 09:15



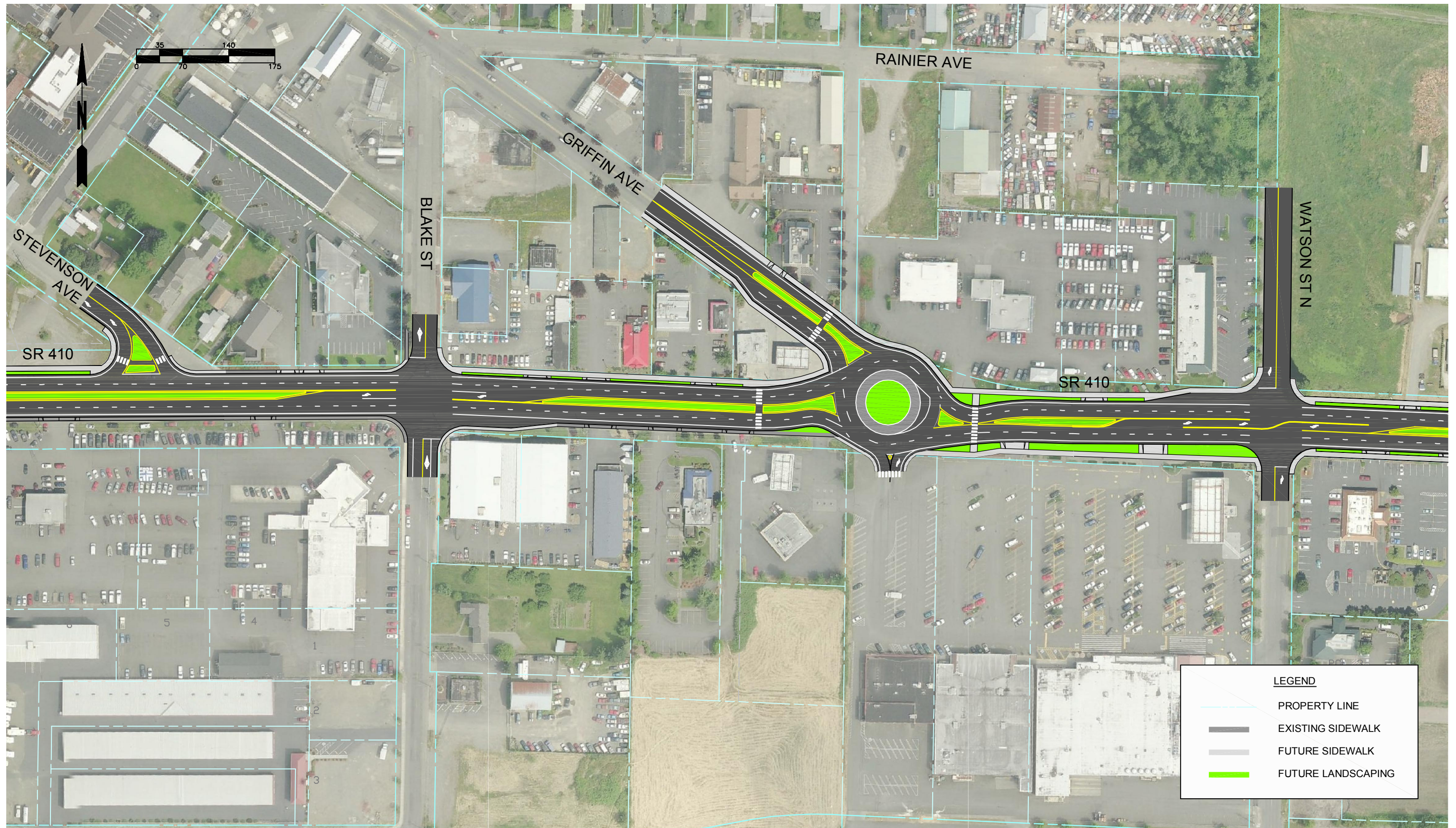
Segment 2: Cole Street and Mountain Villa Drive Intersections - With Dickson Avenue Extension



Segment 2: Cole Street and Roosevelt Avenue Intersections - Dual Roundabouts



Segment 2: SR 164/Watson Street - Signal with Restricted Movements



Segment 2: SR 164/Watson Street - Roundabout with Restricted Movements



Segment 2: SR 164/Watson Street - Dual Signals

SR 410 Corridor Study

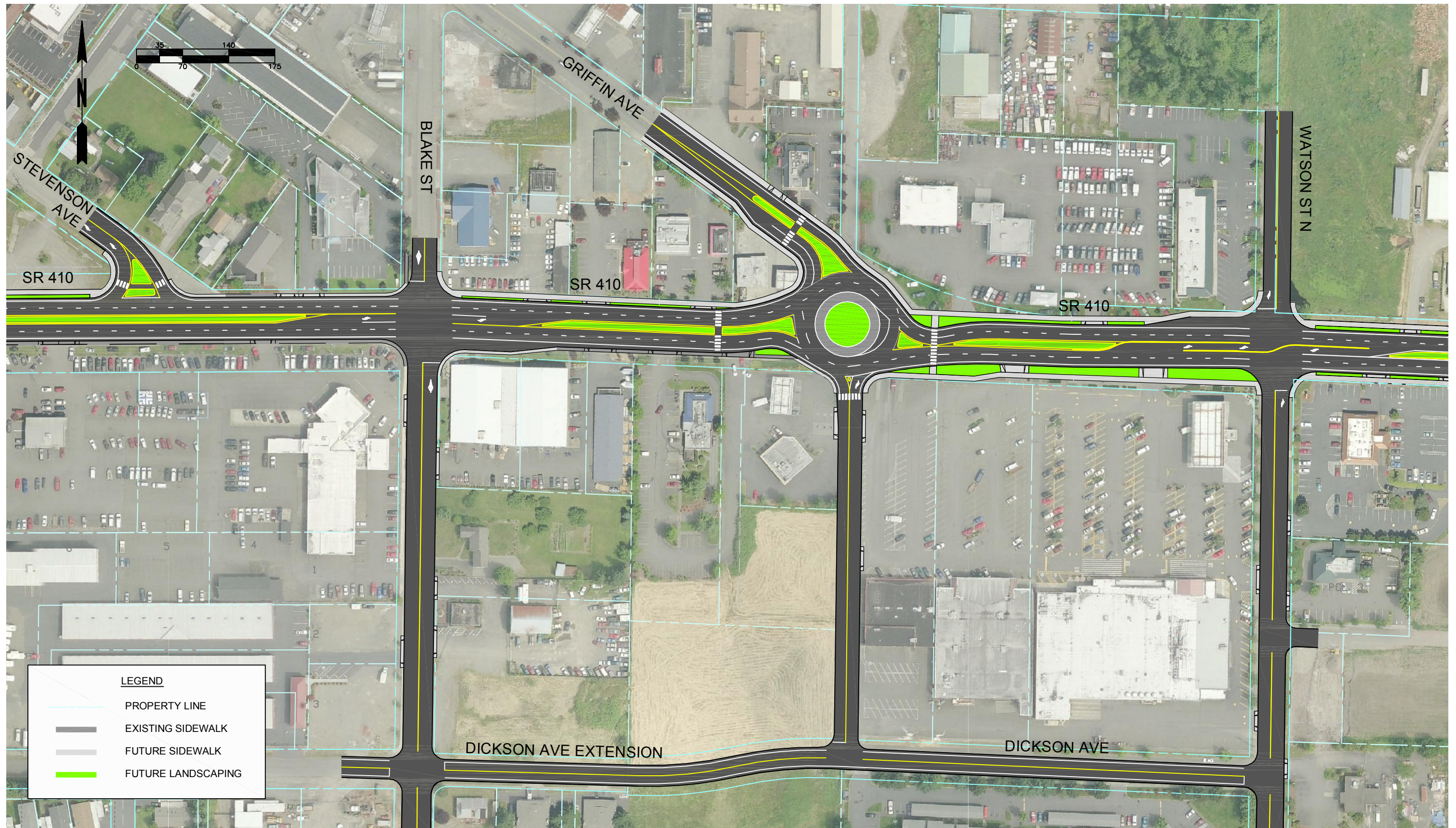
M:\06\06395 SR 410 Corridor Study\6.0 Graphics\Alternatives\Alt_02 <A> robertm 12/10/09 16:02



Segment 2: Garrett Street (2nd Street) to Griffin Avenue - TWLTL

SR 410 Corridor Study

M:\06\06395 SR 410 Corridor Study\6.0 Graphics\Alternatives\Alt_05 <A> RobertM 06/23/10 16:12

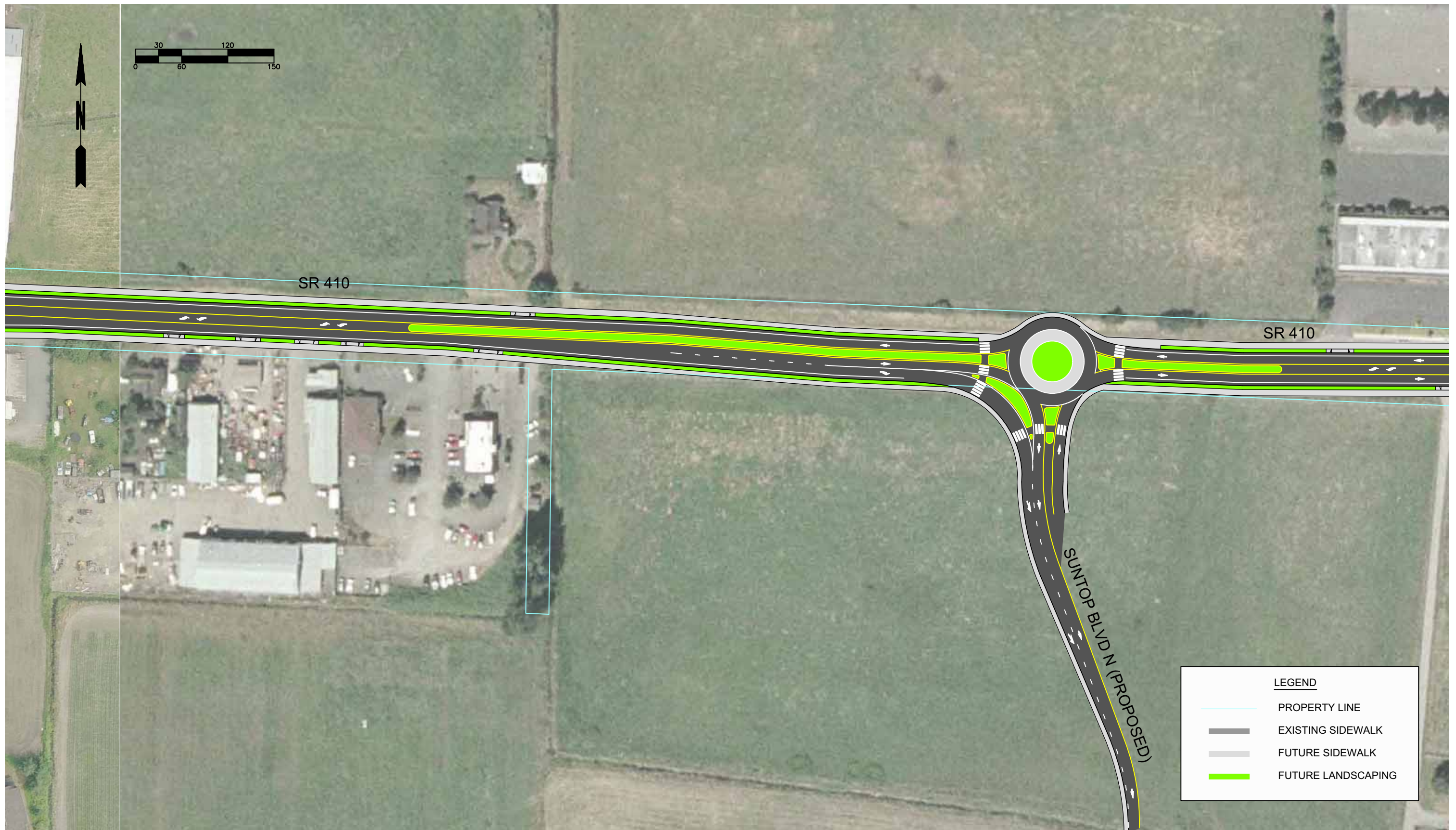


Segment 2: SR 164/Watson Street - Roundabout with Dickson Avenue Extension

FIGURE



Segment 2: SR 164/Watson Street - Relocate SR 164 Traffic to Blake Street



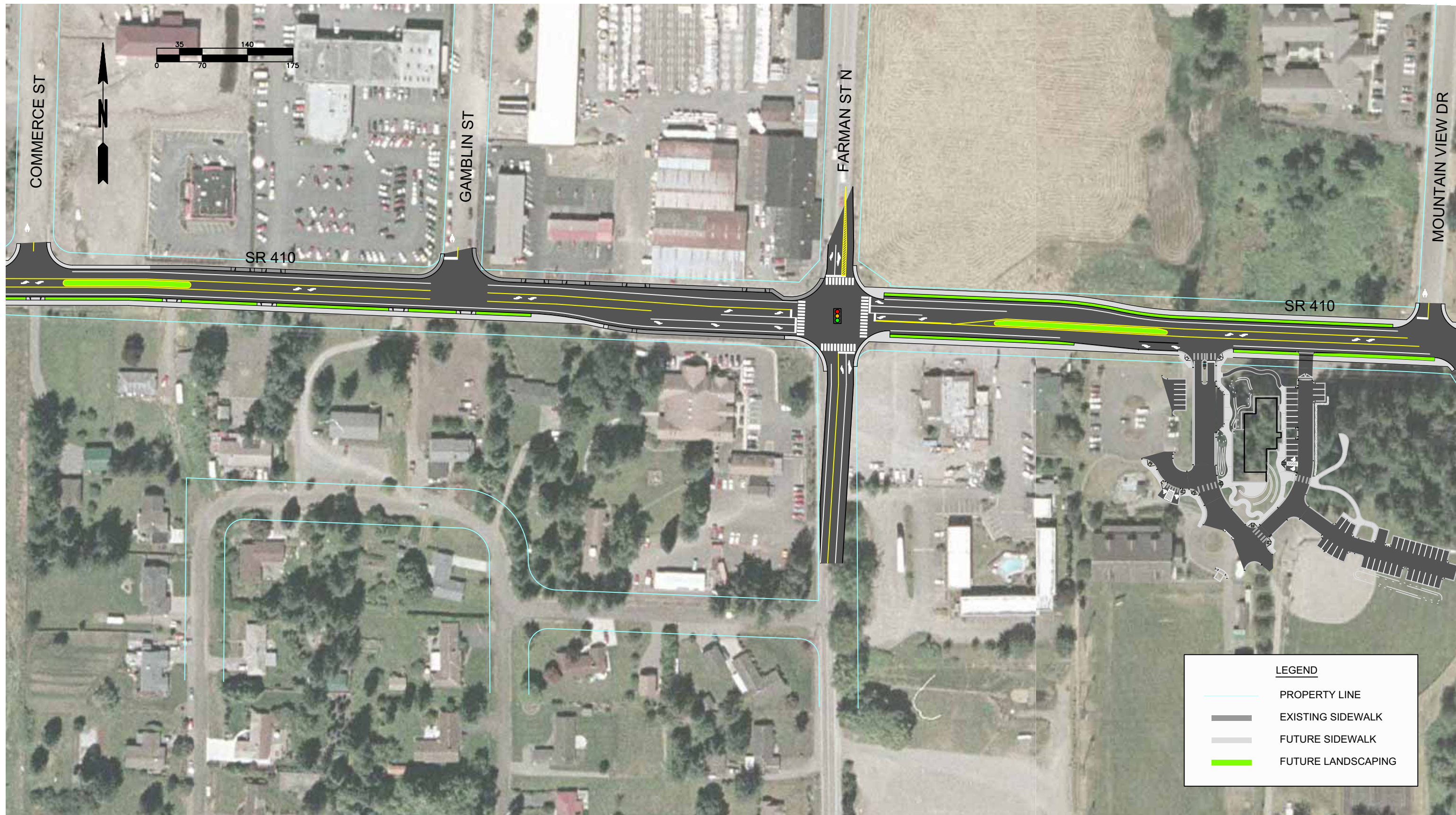
Segment 2: Suntop Farms - Roundabout

SR 410 Corridor Study

M:\06\06395 SR 410 Corridor Study\6.0 Graphics\Alternatives\Seg2-3 <SUNTOP> robertm 05/21/10 09:15

FIGURE

30



Segment 3: Farman Street and Enumclaw Welcome Center

SR 410 Corridor Study

M:\06\06395 SR 410 Corridor Study\6.0 Graphics\Alternatives\Seg2-3 <FARMAN> robertm 05/21/10 09:15

FIGURE

31