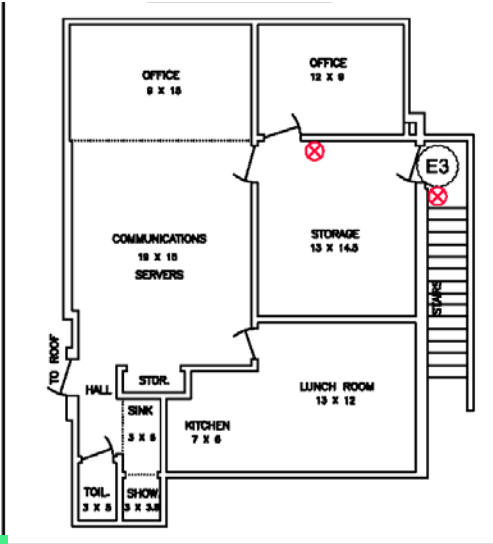




Facility Self Assessment and Facility Plans
December 2016

Facilities – ADA Accessibility

- The 3 key administrative buildings of the city have been retrofitted to provide wheelchair access to the building and public service areas within:
 - City Hall
 - Police Department, and,
 - Public Works and Planning and Development Departments

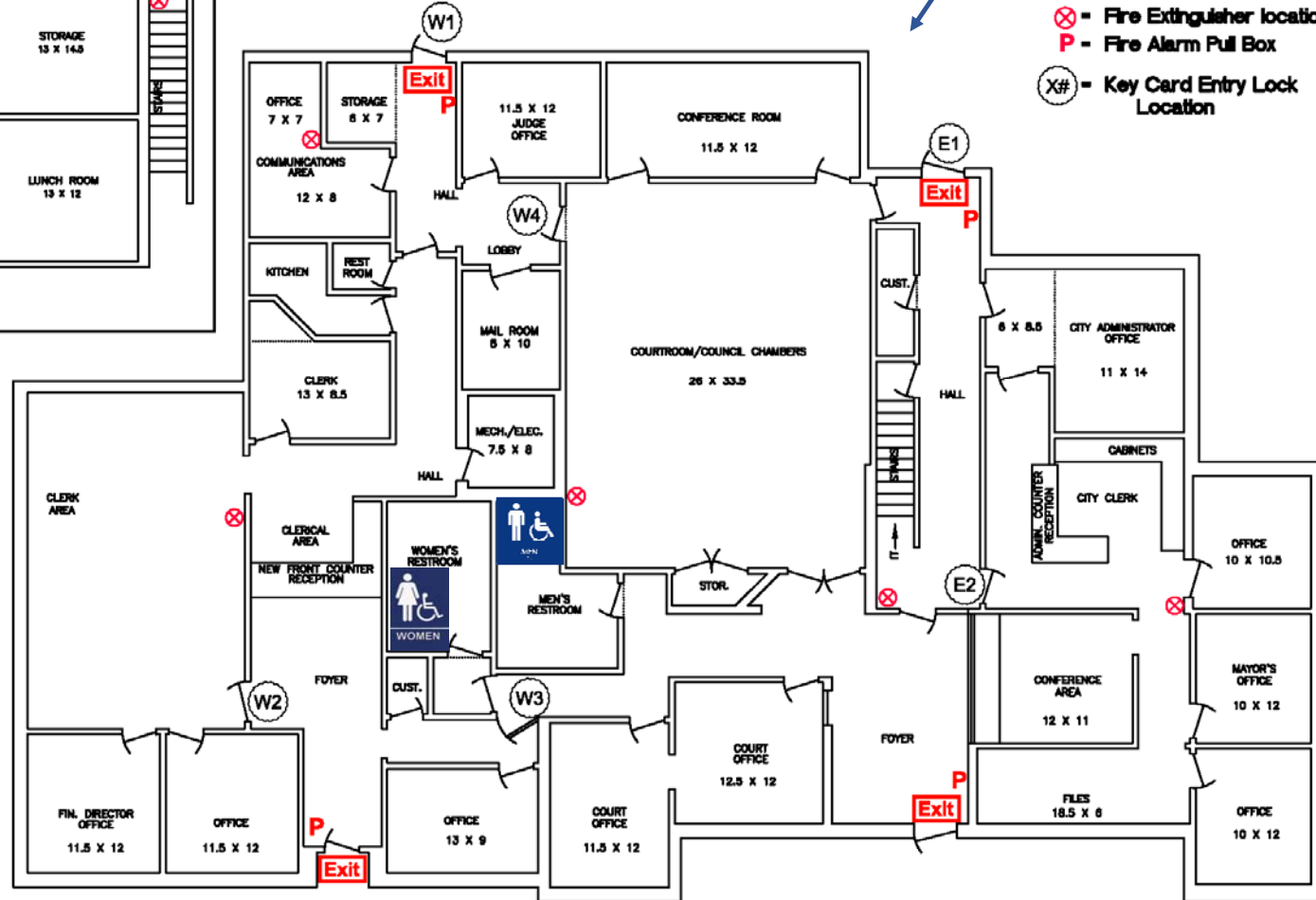


ENUMCLAW CITY HALL BUILDING FIRST FLOOR



Legend

- Fire Extinguisher location
- Fire Alarm Pull Box
- Key Card Entry Lock Location

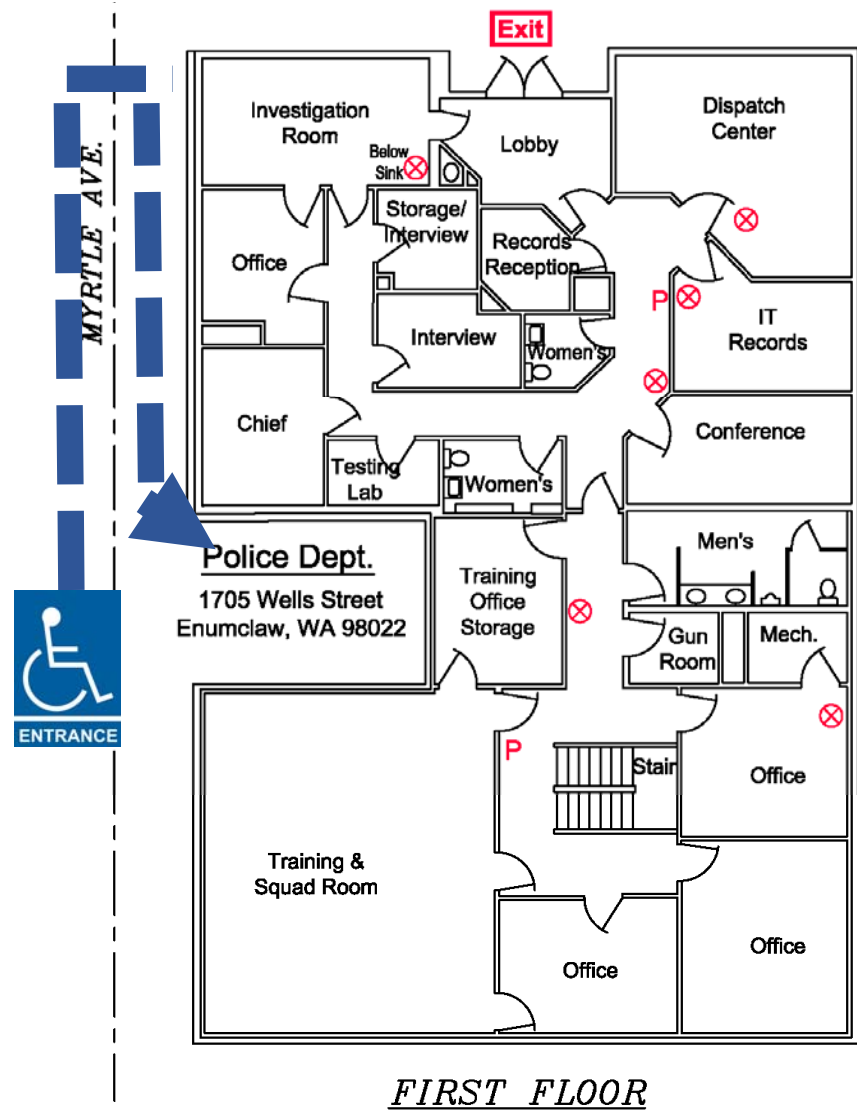


City Hall

City Hall First Floor is fully accessible via Exit/Entry E1, which is equipped with an automatic door opener to facilitate wheelchair access. Handicap parking is reserved immediately outside this door. City offices serving the public, including the mayors and city administrators offices, council chambers and the finance / payments office are all open and accessible during normal business hours. No public services or access is provided on the second floor.

Police Department –
Upstairs 1 of 2

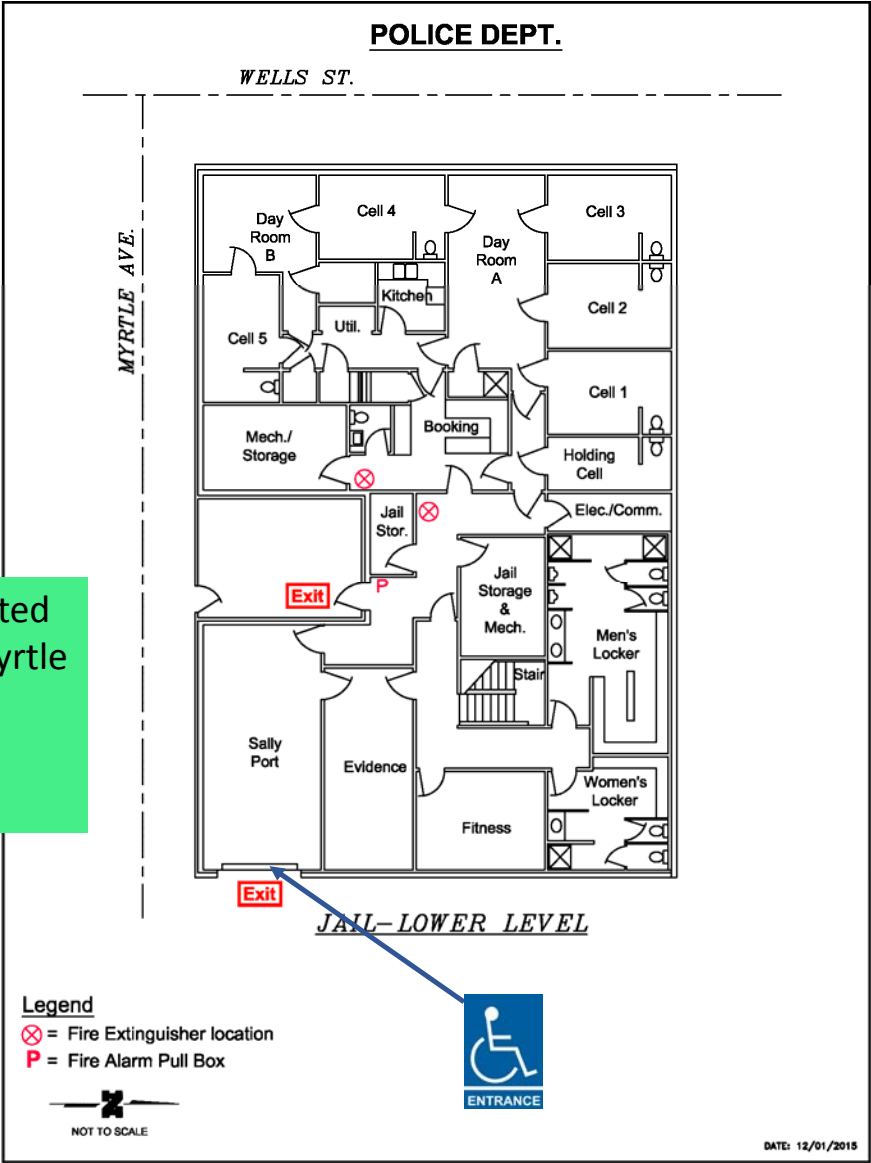
The Police Department is ADA
accessible via a wheelchair ramp
located on Wells Street



Legend

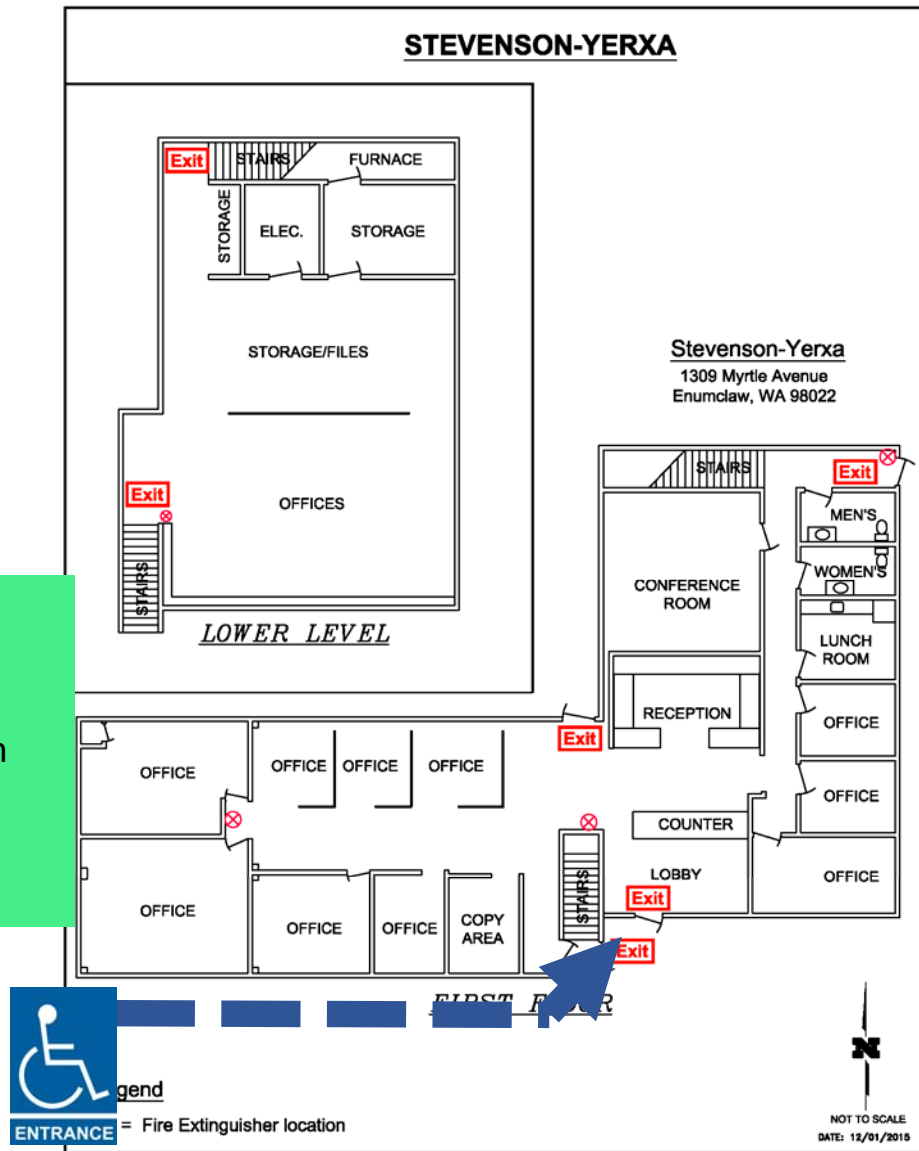
Police Department
Downstairs 2 of 2

Lower floor access to the jail is located via the Sally port off the alley on Myrtle Street between Wells and Porter.



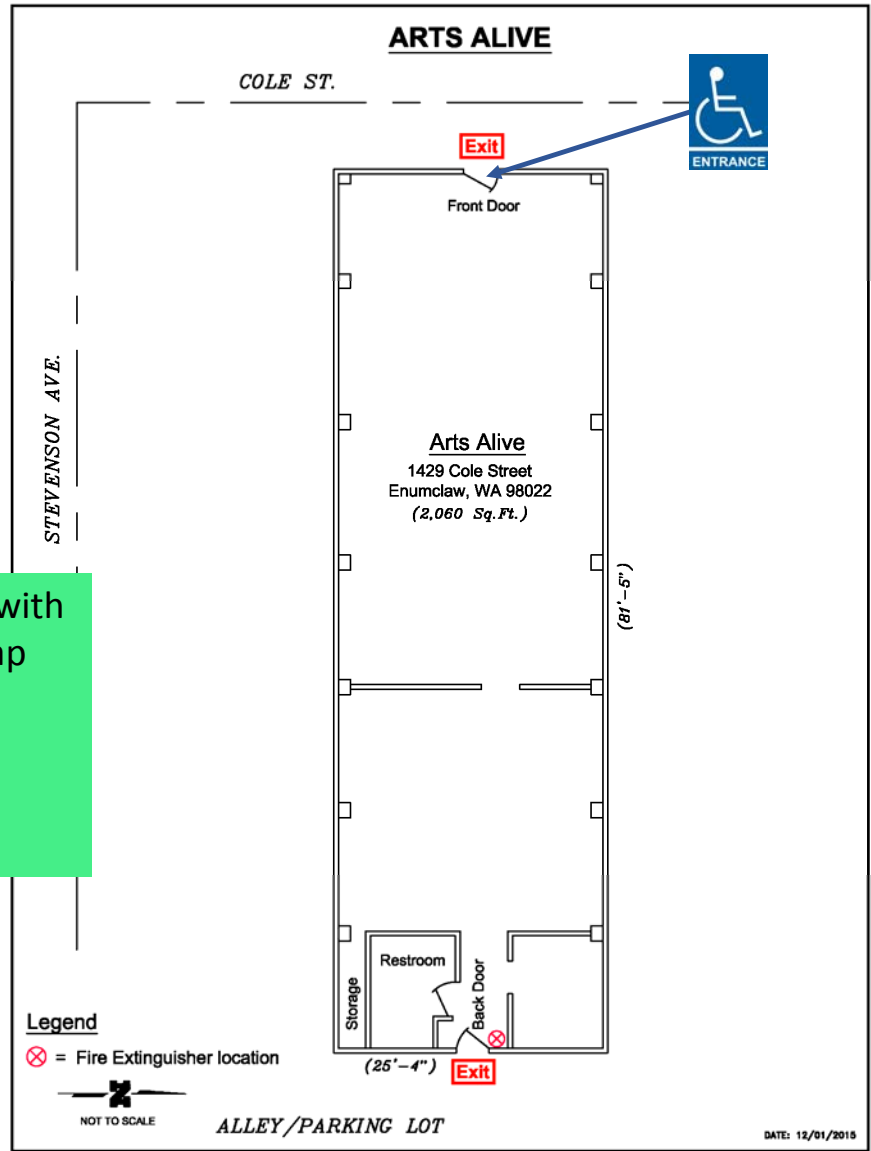
Stevenson-Yerxa
(Public Works and
Planning)

Access to the Planning/Community
Development Departments,
Engineering and Public Works is
available via the wheelchair ramp on
Myrtle Ave.



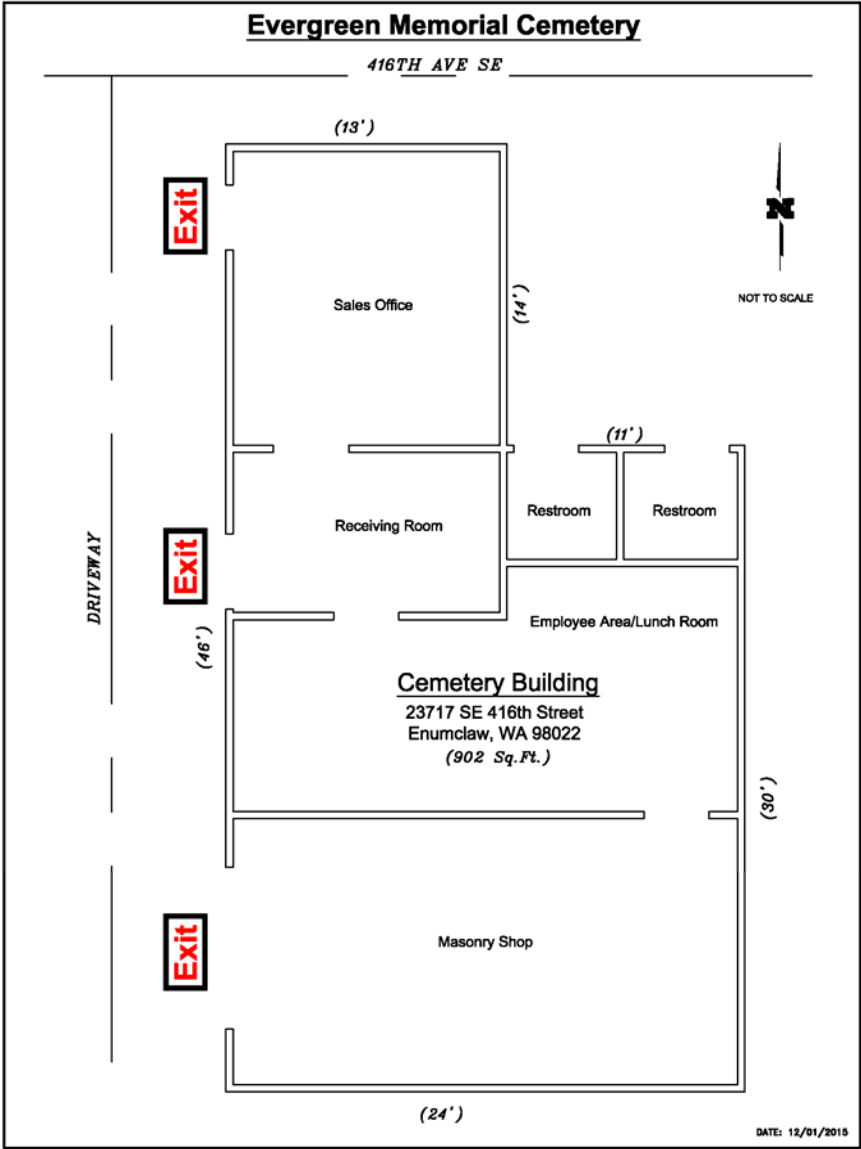
Arts Alive

This building is accessible at grade with no barriers on Cole Street. Handicap parking is located in the adjacent parking lot.



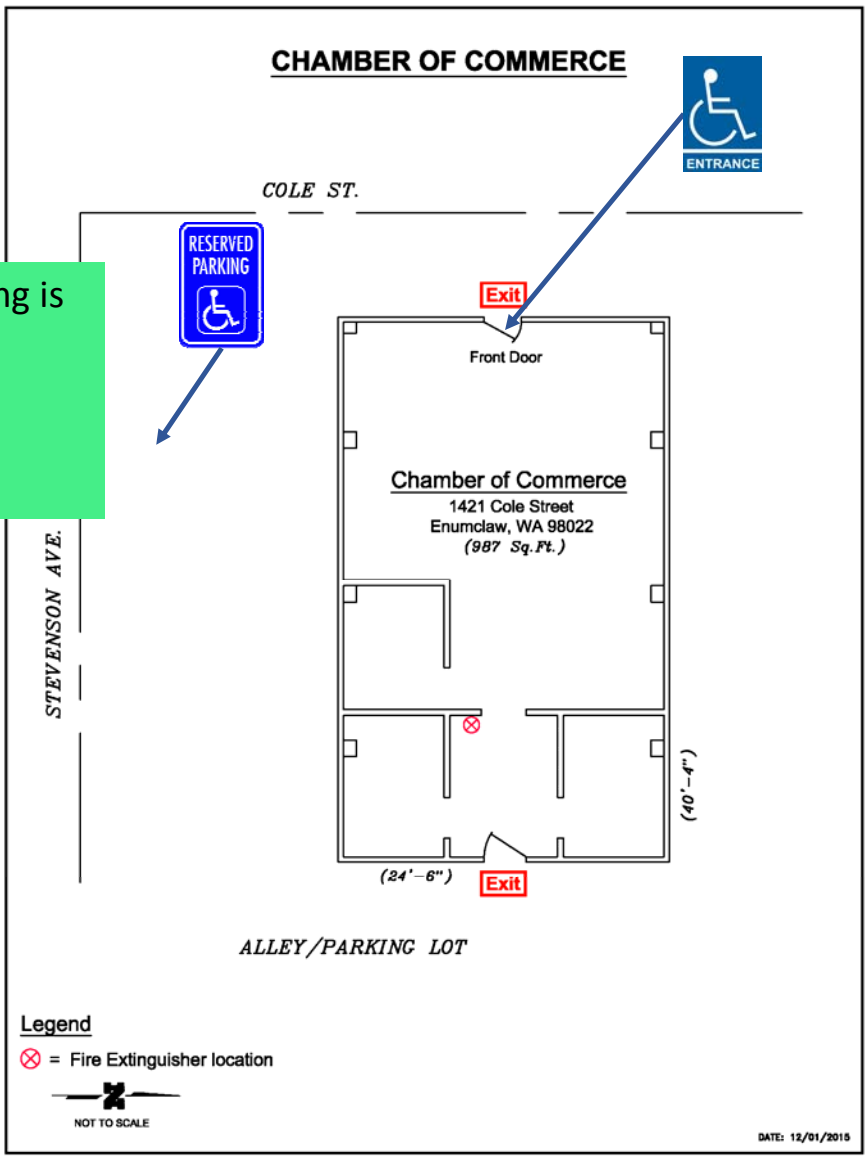
Cemetery Office

To be reviewed



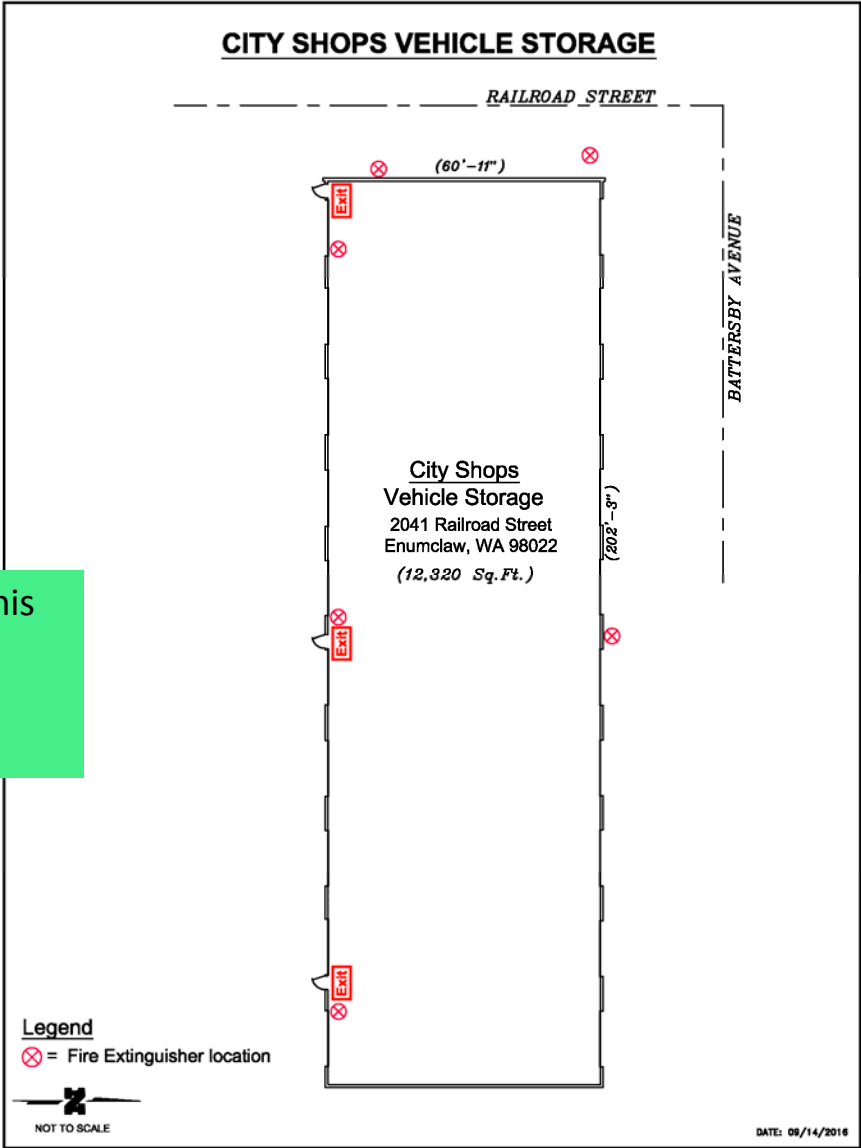
Chamber of Commerce

The Chamber of Commerce Building is accessible from Cole Street with van/handicap parking adjacent.

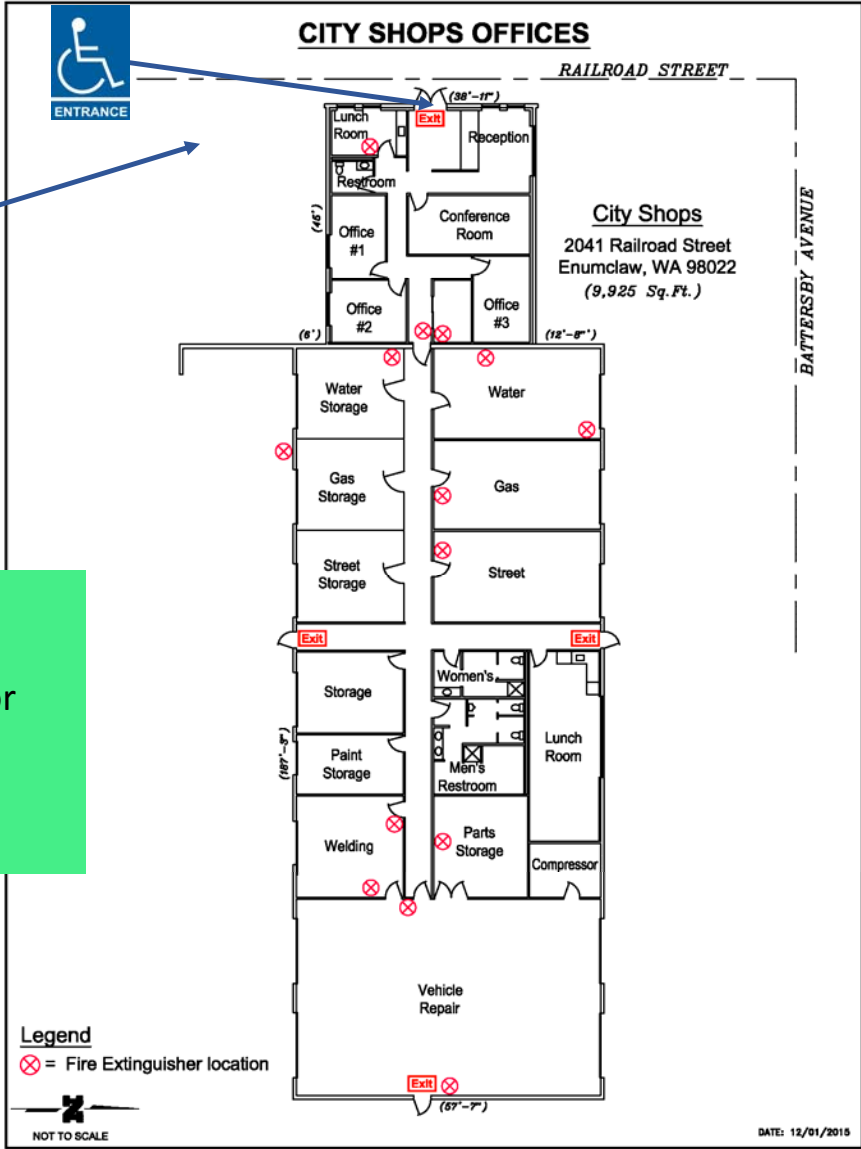


City Shops Vehicle Storage

All bays at the shop are at grade. This building is not publically accessible.



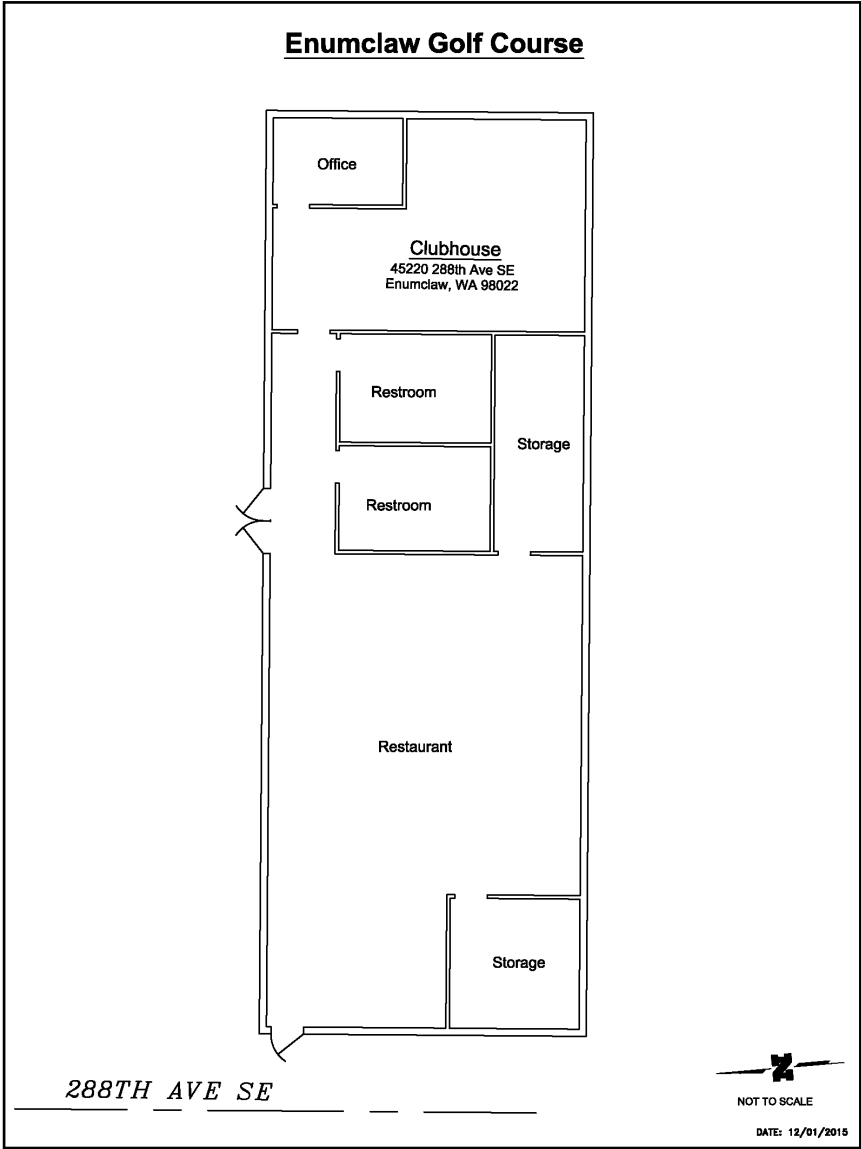
City Shops



The front door of the Public Works Shops Building is at grade, however requires either a powered opener or doorbell.

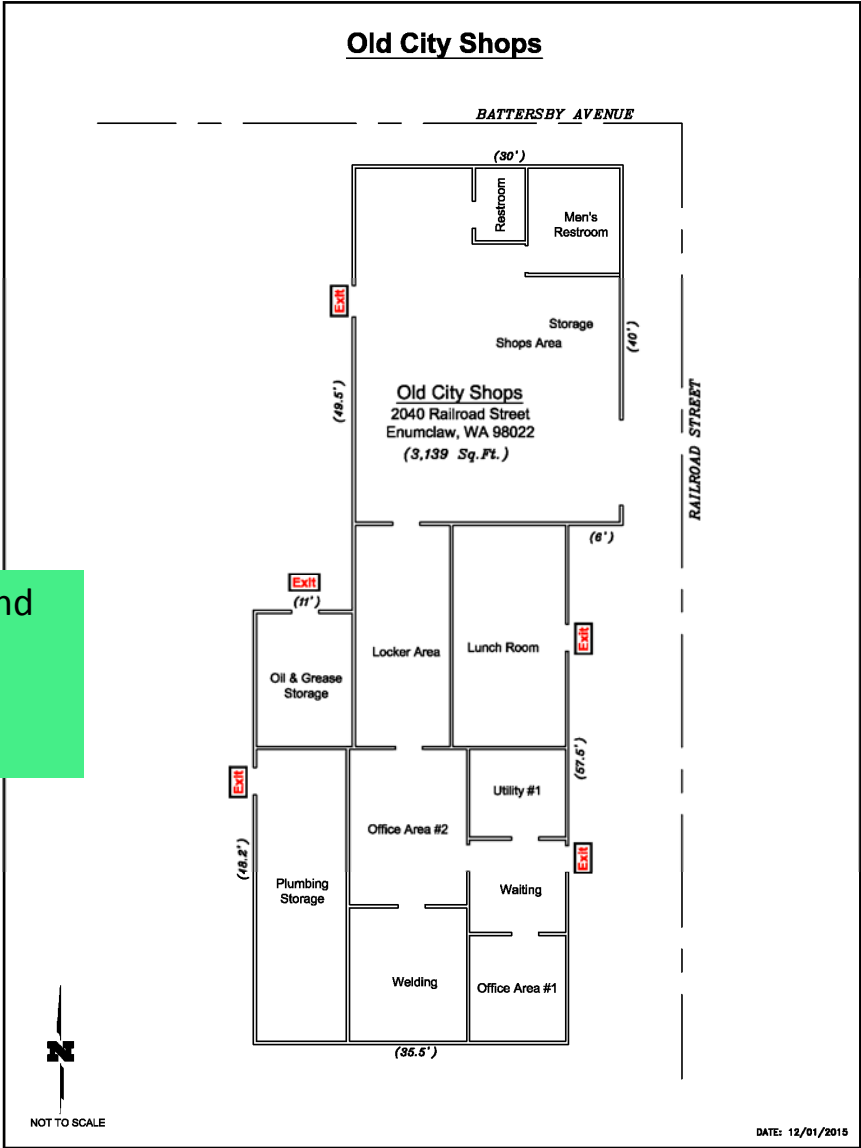
Golf Club House

This leased facility requires inspection and review.



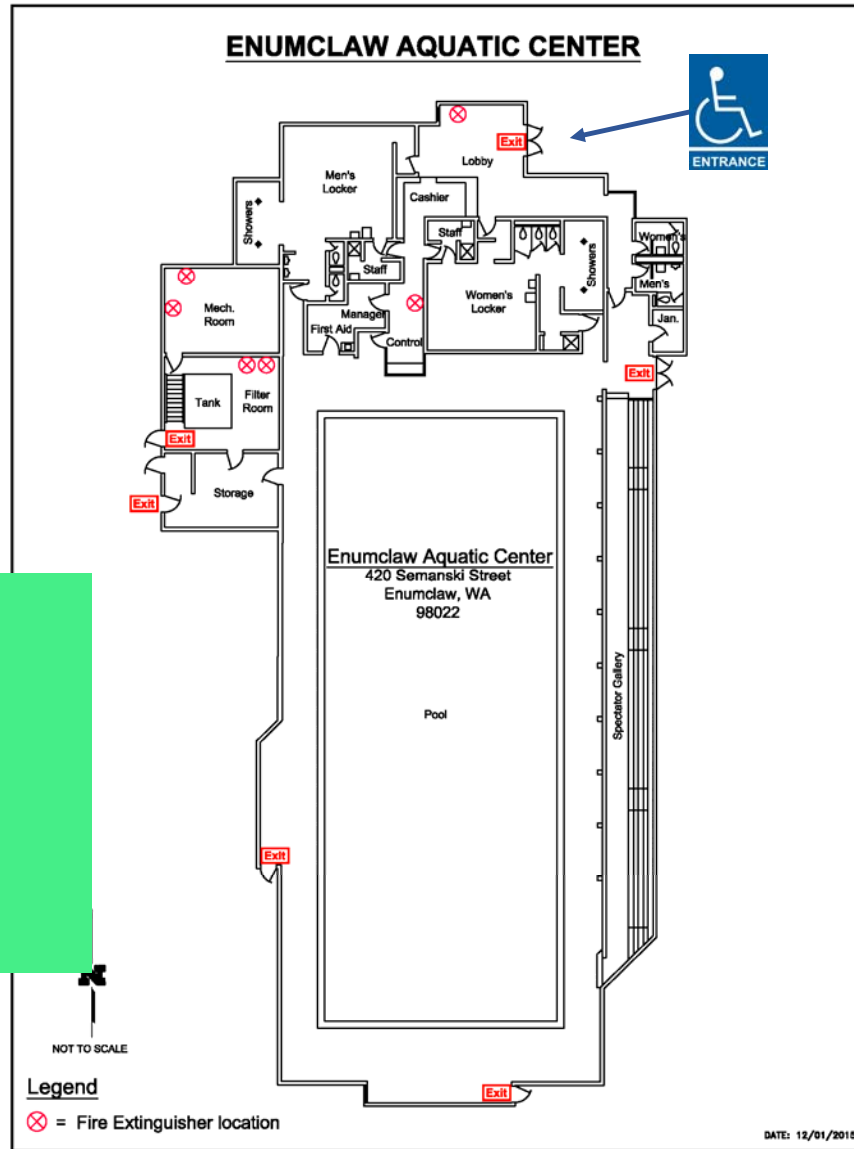
Old City Shops

This building has no public access and no public facilities.



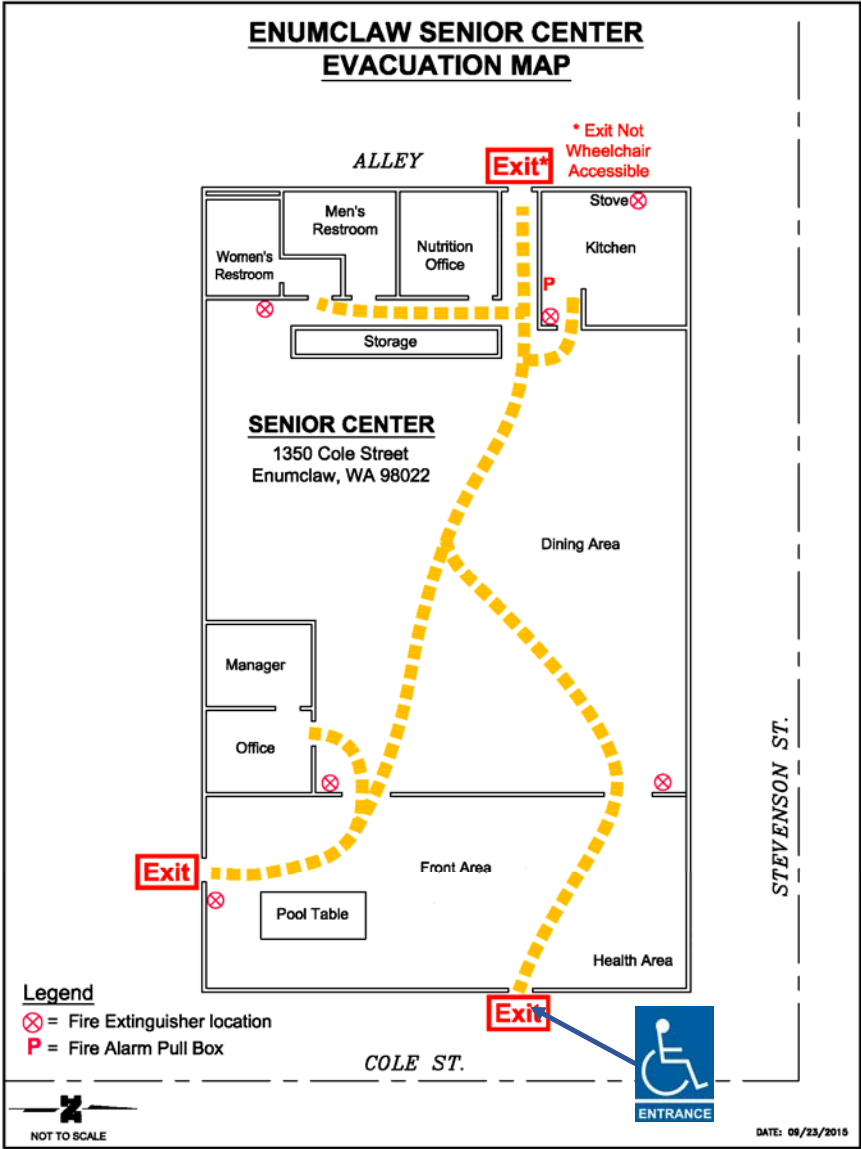
Pool

The front door and pool itself are accessible and accommodations to access the pool are available on request. Other facilities, including locker rooms and shower / toilet facilities require review.



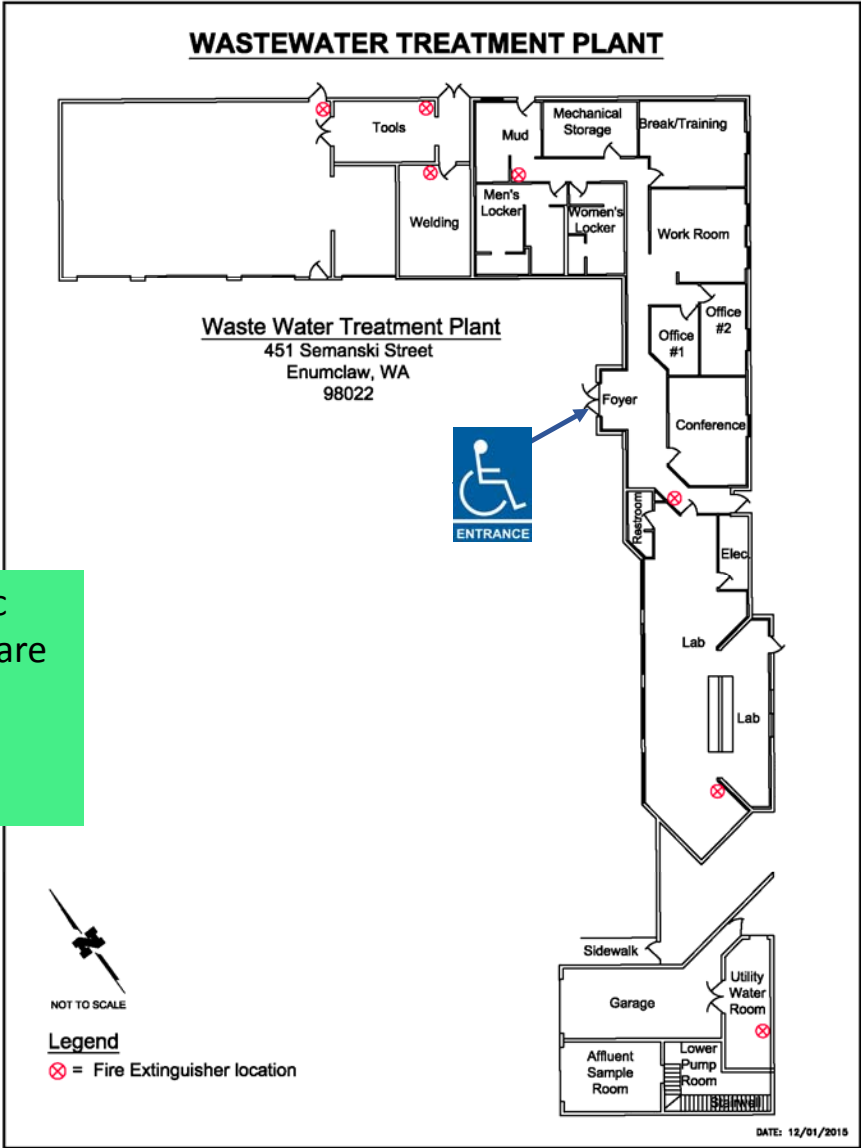
Senior Center

Both access doors to the facility and restrooms are handicap accessible



Wastewater Treatment Plant

The WWTP is not open to the public but the offices and indoor facilities are ADA compliant.



Youth Center

The Youth Center is handicap accessible from Cole St. with parking in the lot adjacent to the Senior Center.

